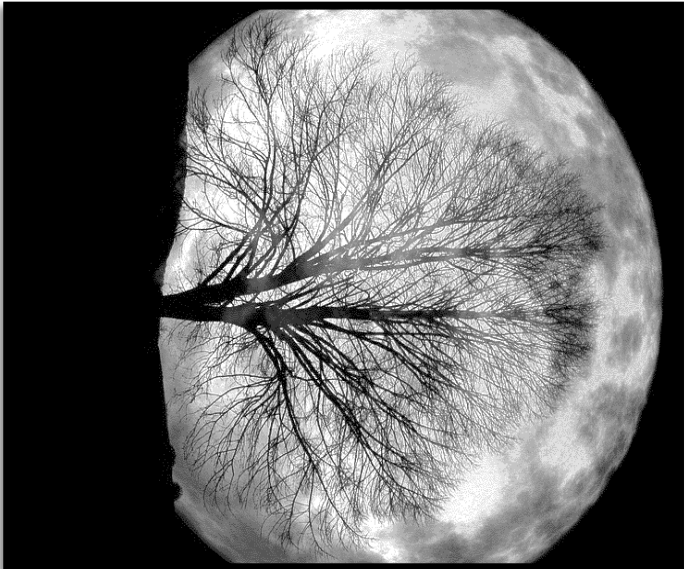


WEEKLY READING WEEK SET #4



PREDICTIONS: MAKE A PREDICTION OF WHAT YOU WILL BE READING ABOUT.

ANALYZE THE POEM

How many lines does the poem have?

How many stanzas does the poem have?

**BED IN THE SUMMER
BY: ROBERT LOUIS STEVENSON**

In winter I get up at night,
And dress by yellow candle light.
In summer quite the other way,
I have to go to bed by day.

I have to go to bed and see
The birds still hopping on the tree,
Or hear the grown-up people's feet,
Still going past me in the street.

And does it not seem hard to you,
When all the sky is clear and blue,
And I should like so much to play,
To have to go to bed by day?

WHAT TYPE OF POEM IS IT?

Prove it: _____

WHAT CONNECTION CAN YOU MAKE WITH THIS STORY? [TEXT, SELF, WORLD]

ANSWER THE FOLLOWING QUESTIONS. MAKE SURE TO USE EVIDENCE FROM THE POEM TO SUPPORT YOUR ANSWER.

1. What does this poem mean?

2. What is the main theme of the poem?

3. Why did the author write this poem?
